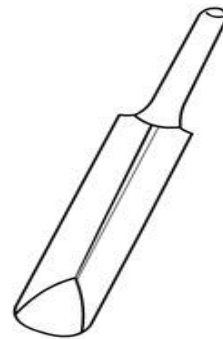
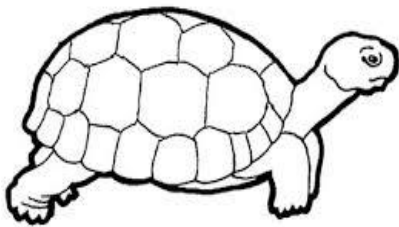

Name:

Instruction: Say the name of each picture. Put an x on the picture that ends the /t/ sound. Colour the pictures.

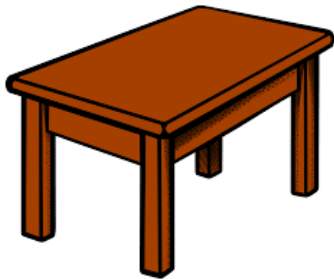
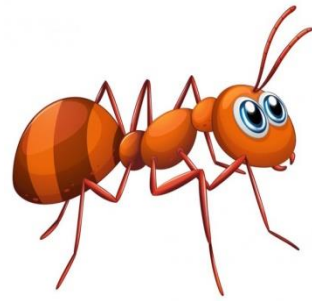
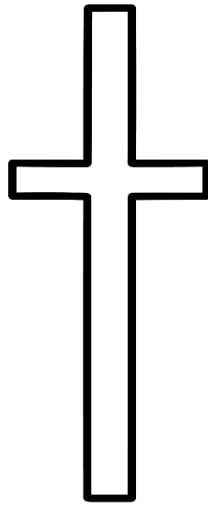
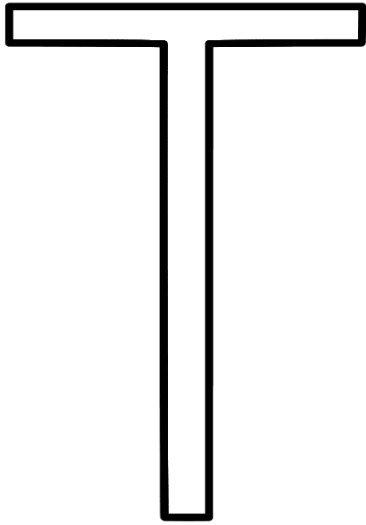


Year 2 Week 1 Day 1



Name:

Instructions: Say the name of each picture. Circle the picture that begins with the /t/ sound. Finger paint the picture.



Year 2 Week 1 Day 2

Name:

Instruction 1: Colour the tent.



Instruction 2: Trace the uppercase **T** and the lowercase **t**.



Year 2 Week 1 Day 3



Name:

Instruction 1: Read the blends.



Instruction 2: Read the blends. Say the name of each picture. Match the beginning blend you hear to the correct picture.

ta te ti to tu



Year 2 Week 1 Day 4



Name:

Instructions: Follow the guide to correctly trace uppercase T and lowercase t.

The tracing guide is contained within a large rectangular frame. At the top left, it shows a large uppercase 'T' and a lowercase 't' on a three-line grid (top, middle-dashed, bottom). Arrows and numbers indicate stroke order: '1' with a downward arrow for the vertical stem, and '2' with a rightward arrow for the horizontal top bar. To the right of this guide is a colorful cartoon turkey. Below the guide are three rows of handwriting practice lines. The first row contains ten dotted uppercase 'T's for tracing, each with a red starting dot and a downward arrow. The second row contains ten dotted lowercase 't's for tracing, each with a red starting dot and a downward arrow. The third row contains four dotted uppercase 'T's and four dotted lowercase 't's for tracing. The remaining two rows are blank handwriting lines for independent practice.

Year 2 Week 1 Day 5

